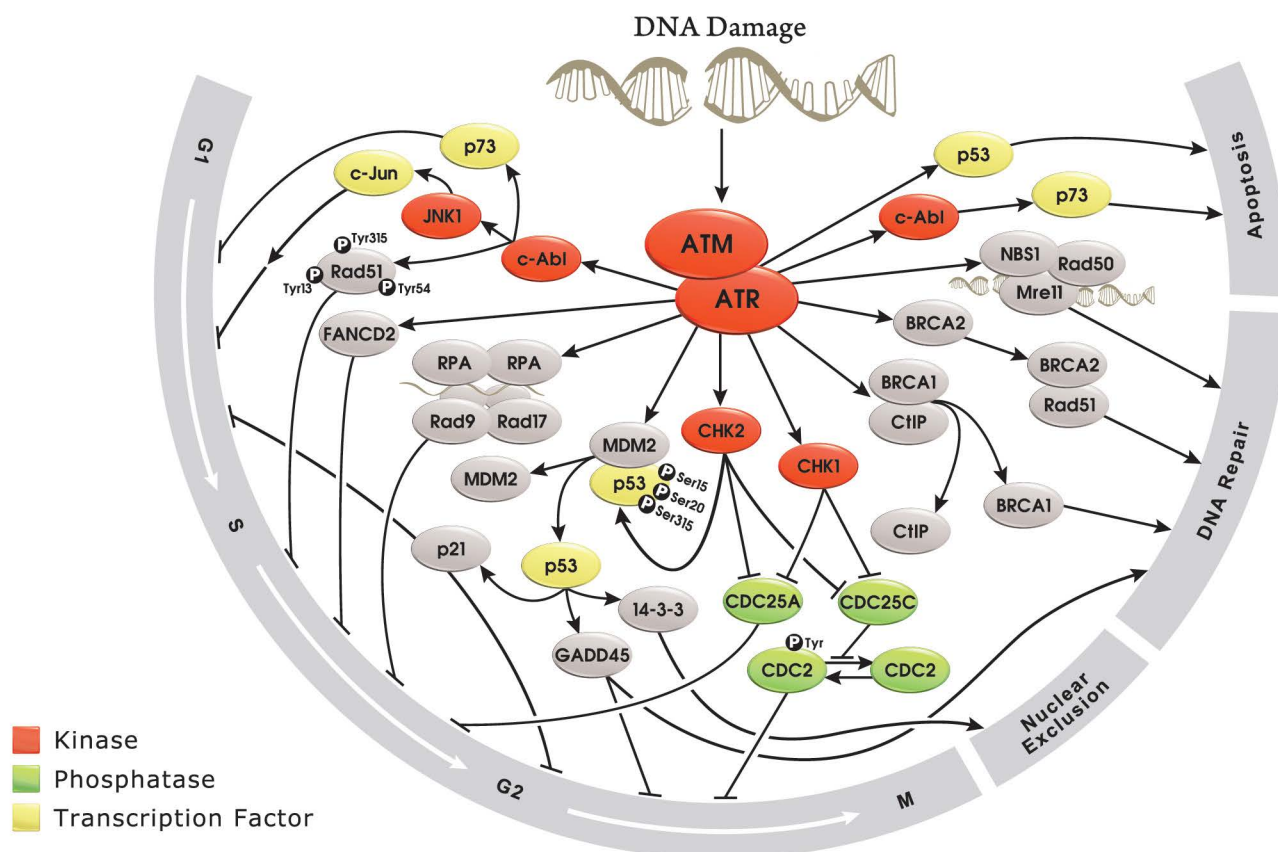


# DNA Damage and Repair

- Your Expertise
- Our Antibodies
- Accelerated Discovery

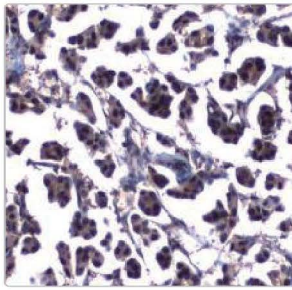
www.genetex.com



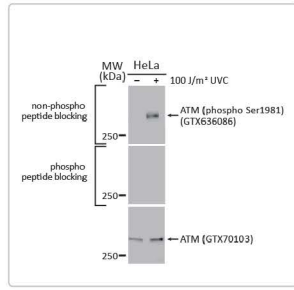
Mammalian DNA is constantly being compromised by various endogenous and exogenous insults. This damage can include crosslinks, base modifications, base mismatches, stalled replication forks, single-strand breaks (SSBs), and particularly dangerous double-strand breaks (DSBs). The magnitude of this assault on the genome is conveyed by the fact that a cell can experience at least 10,000 SSBs per day, with unrepaired lesions potentially being converted to DSBs. Fortunately, eukaryotes possess an array of distinct but often interlinked pathways to detect and repair damaged DNA, including base excision repair (BER), nucleotide excision repair (NER), mismatch repair (MMR), single-strand break repair (SSBR), non-homologous end joining (NHEJ), and homologous recombination (HR), among others. In addition to these, checkpoints can arrest cell cycle progression to allow for DNA repair and prevent transmission of damaged DNA to daughter cells. The overriding goal of these mechanisms is the preservation of genomic integrity.

GeneTex offers an outstanding selection of antibodies to support DNA damage and repair research. Please see our highlighted antibodies or visit our website for the full catalog.

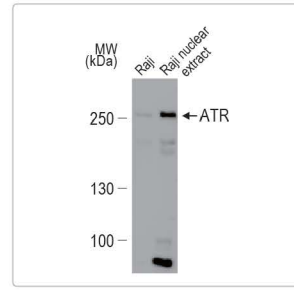




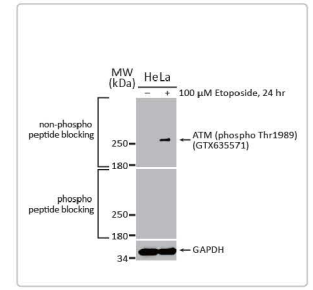
ATM antibody [2C1-RB] (GTX635395)



ATM (phospho Ser1981) antibody [HL1062] (GTX636086)



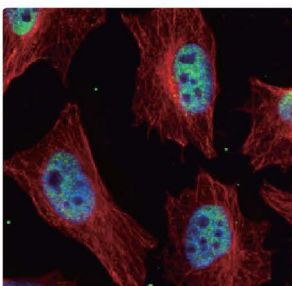
ATR antibody [2B5] (GTX70109)



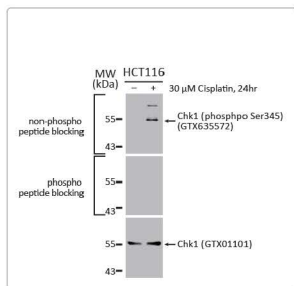
ATR (phospho Thr1989) antibody [HL132] (GTX635571)

## DNA Damage and Repair

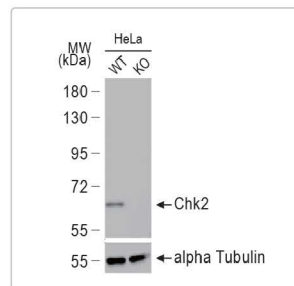
Cat. No.	Product Name	Clonality	Reactivity	Application
GTX133736	14-3-3 antibody	Rb pAb	Hu,Ms	WB
GTX113296	14-3-3 beta antibody [N1C2]	Rb pAb	Hu,Ms,Rat	WB, ICC/IF, IHC-P
GTX109090	14-3-3 epsilon antibody [N1C3]	Rb pAb	Hu,Ms	WB, ICC/IF, IHC-P, IP
GTX113298	14-3-3 gamma antibody	Rb pAb	Hu,Ms,Rat	WB, ICC/IF, IHC-P, IP
GTX100801	14-3-3 sigma antibody	Rb pAb	Hu,Ms	WB, ICC/IF, IHC-P, IP
GTX102199	14-3-3 theta antibody	Rb pAb	Hu,Ms,Zfsh	WB, IHC-P
GTX101075	14-3-3 zeta antibody	Rb pAb	Hu,Ms,Rat	WB, ICC/IF, IHC-P
GTX635479	53BP1 antibody [HL275]	Rec Rb mAb	Hu,Ms,Rat,Cat,Dog	WB, ICC/IF, IHC-P
GTX70310	53BP1 antibody	Rb pAb	Hu,Ms	WB, ICC/IF, IHC-P, IHC
GTX110558	APE1 antibody	Rb pAb	Hu,Ms,Rat	WB, ICC/IF, IHC-P, IP, ChIP assay
GTX635395	ATM antibody [2C1-RB]	Rec Rb mAb	Hu,Ms,Rat	WB, IHC-P
GTX70103	ATM antibody [2C1]	Ms mAb	Hu,Ms,Rat,Mk	WB, ICC/IF, IHC-P, FACS, IP, ELISA, ChIP assay, IHC
GTX111106	ATM antibody	Rb pAb	Hu,Cat	WB, ICC/IF, IHC-P
GTX636086	ATM (phospho Ser1981) antibody [HL1062]	Rec Rb mAb	Hu	WB, ICC/IF, IHC-P
GTX132146	ATM (phospho Ser1981) antibody	Rb pAb	Hu,Ms	WB, ICC/IF, IHC-P
GTX70109	ATR antibody [2B5]	Ms mAb	Hu,Ms	WB, ICC/IF, IP, Functional Assay
GTX128146	ATR antibody	Rb pAb	Hu,Ms	WB, ICC/IF, IHC-P, IP
GTX133852	ATR (phospho Ser428) antibody	Rb pAb	Hu	WB, ICC/IF
GTX635571	ATR (phospho Thr1989) antibody [HL132]	Rec Rb mAb	Hu,Ms,Rat	WB, ICC/IF, IHC-P
GTX631845	ATR (phospho Thr1989) antibody [GT222]	Ms mAb	Hu	WB, ICC/IF, IP
GTX128145	ATR (phospho Thr1989) antibody	Rb pAb	Hu,Ms	WB, ICC/IF, IHC-P, IP
GTX635478	ATRAX antibody [HL1210]	Rec Rb mAb	Hu	WB, ICC/IF
GTX629703	ATRAX antibody [GT4212]	Ms mAb	Hu,Ms	WB, ICC/IF
GTX101310	ATRAX antibody [C3], C-term	Rb pAb	Hu,Ms,Rat	WB, ICC/IF, IHC-P, IP
GTX635715	Bax antibody [HL236]	Rec Rb mAb	Hu,Ms,Rat	WB, IHC-P
GTX109683	Bax antibody [N1N2], N-term	Rb pAb	Hu,Ms,Rat	WB, ICC/IF, IHC-P, IHC-Fr, IP
GTX628905	Bcl-2 antibody [GT11210]	Ms mAb	Hu	WB, IHC-P
GTX100064	Bcl-2 antibody [N1N2], N-term	Rb pAb	Hu,Ms,Rat,Zfsh,Cat,Dog	WB, ICC/IF, IHC-P
GTX129653	Bcl-2 (phospho Ser70) antibody	Rb pAb	Hu	WB
GTX129654	Bcl-2 (phospho Ser87) antibody	Rb pAb	Hu	WB
GTX101303	BLM antibody [C3], C-term	Rb pAb	Hu	WB, ICC/IF, IHC-P
GTX70111	BRCA1 antibody [17F8] - ChIP grade	Ms mAb	Hu,Ms	WB, ICC/IF, IHC-P, IP, ELISA, ChIP assay, IHC
GTX100720	BRCA1 antibody [C3], C-term	Rb pAb	Hu	WB, ICC/IF
GTX70123	BRCA2 antibody [5F6]	Ms mAb	Hu	WB, IHC-P, IHC-Fr
GTX111317	c-Abl antibody	Rb pAb	Hu	WB, ICC/IF, IHC-P



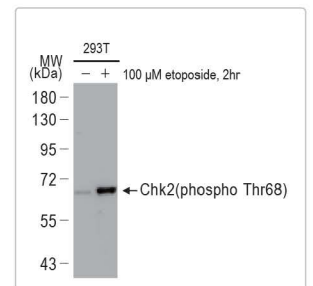
Chk1 antibody [C1C2-6], Internal (GTX100070)



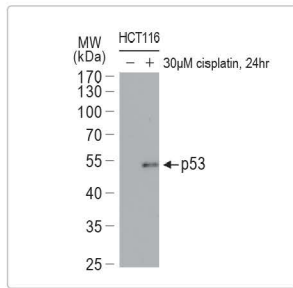
Chk1 (phospho Ser345) antibody [HL122] (GTX635572)



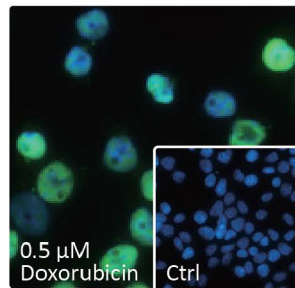
Chk2 antibody [4B8] (GTX70100)



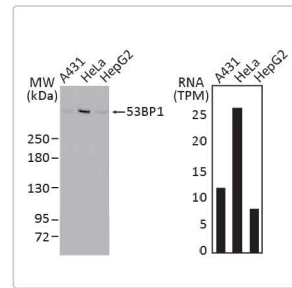
Chk2 (pThr68) antibody (GTX132204)



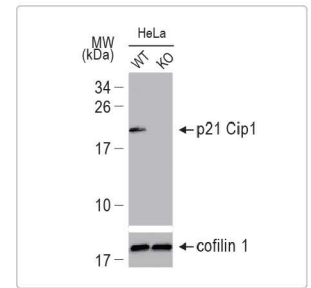
p53 antibody [D01]  
(GTX70214)



p53 (pSer15) antibody  
(GTX132995)



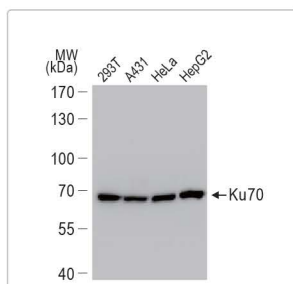
53BP1 antibody [HL275]  
(GTX635479)



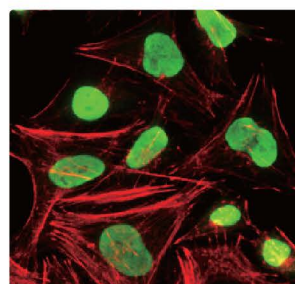
p21 Cip1 antibody [GT1032]  
(GTX629543)

## DNA Damage and Repair

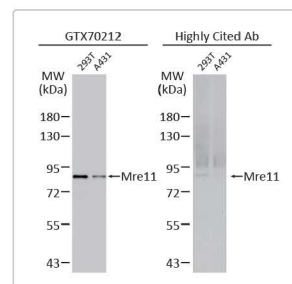
Cat. No.	Product Name	Clonality	Reactivity	Application
GTX133980	c-Abl (phospho Tyr245) antibody	Rb pAb	Hu,Ms,Rat	WB
GTX102809	CDC25C antibody	Rb pAb	Hu	WB, ICC/IF, IHC-P
GTX128153	CDC25C (phospho Ser216) antibody	Rb pAb	Hu	WB
GTX100070	Chk1 antibody [C1C2-6], Internal	Rb pAb	Hu	WB, ICC/IF, IHC-P
GTX132170	Chk1 (phospho Ser317) antibody	Rb pAb	Hu	WB, ICC/IF
GTX635572	Chk1 (phospho Ser345) antibody [HL122]	Rec Rb mAb	Hu	WB, ICC/IF
GTX100065	Chk1 (phospho Ser345) antibody [C1C2], Internal	Rb pAb	Hu,Ms	WB, ICC/IF, IHC-P
GTX70100	Chk2 antibody [4B8]	Ms mAb	Hu	WB, IP
GTX133989	Chk2 (phospho Ser19) antibody	Rb pAb	Hu	WB
GTX132204	Chk2 (phospho Thr68) antibody	Rb pAb	Hu	WB, ICC/IF
GTX70141	DNA ligase I antibody [10H5]	Rec Ms mAb	Hu,Ms	WB, ICC/IF, IHC-P, IP
GTX102936	DNA ligase I antibody [C2C3], C-term	Rb pAb	Hu	WB
GTX638333	DNA ligase III antibody [HL2280]	Rec Rb mAb	Hu,Ms,Rat	WB
GTX103172	DNA ligase III antibody	Rb pAb	Hu,Ms	WB, ICC/IF, IHC-P
GTX108820	DNA ligase IV antibody	Rb pAb	Hu,Ms,Rat	WB, ICC/IF, IHC-P
GTX636986	DNA polymerase beta antibody [HL1512]	Rec Rb mAb	Hu,Ms,Rat,Zfsh	WB, ICC/IF, IHC-P
GTX102888	DNA polymerase delta antibody	Rb pAb	Hu,Rat	WB, ICC/IF, IHC-P
GTX129526	DNA polymerase epsilon 3 antibody	Rb pAb	Hu	WB
GTX100398	DNA polymerase gamma antibody	Rb pAb	Hu,Rat	WB, ICC/IF, IHC-P, IP
GTX112137	DNA polymerase iota antibody	Rb pAb	Hu	WB, ICC/IF
GTX116332	DNA polymerase mu antibody [N1C1]	Rb pAb	Hu	WB
GTX129282	ERCC1 antibody	Rb pAb	Hu,Ms,Rat	WB, ICC/IF, IHC-P
GTX100145	ERCC8 antibody [N2C2], Internal	Rb pAb	Hu,Ms	WB, ICC/IF, Functional Assay
GTX100277	FOXO3A antibody [C3], C-term	Rb pAb	Hu,Ms,Rat,Squirrel,Xenopus	WB, ICC/IF, IHC-P, IP
GTX113820	RAD23B antibody	Rb pAb	Hu	WB, ICC/IF, IHC-P
GTX636713	Histone H2A.XS139ph (phospho Ser139) antibody [HL1299]	Rec Rb mAb	Hu,Ms	WB, ICC/IF, IHC-P
GTX628789	Histone H2A.XS139ph (phospho Ser139) antibody [GT2311]	Ms mAb	Hu,Ms,Rat	WB, ICC/IF, IHC-P, IP
GTX127342	Histone H2A.XS139ph (phospho Ser139) antibody	Rb pAb	Hu,Zfsh	WB, ICC/IF, IHC-P, IHC-Fr, IHC-Wm, IHC
GTX637963	HMGB1 antibody [HL2059]	Rec Rb mAb	Hu,Ms,Rat	WB, ICC/IF, IHC-P, ELISA
GTX628834	HMGB1 antibody [GT383]	Ms mAb	Hu,Ms,Rat	WB, ICC/IF, IHC-P, IHC-Fr
GTX101277	HMGB1 antibody	Rb pAb	Hu,Ms,Rat,Zfsh,Pig	WB, ICC/IF, IHC-P, IHC-Wm, IHC, IHC (Free Floating)
GTX101820	Ku70 antibody	Rb pAb	Hu,Ms	WB, ICC/IF, IHC-P, IP, PLA
GTX70276	Ku80 antibody [149.8]	Ms mAb	Hu,Mk	WB, ICC/IF
GTX109935	Ku80 antibody [N3C2], Internal	Rb pAb	Hu,Ms,Rat	WB, ICC/IF, IHC-P, IP, PLA
GTX100531	MDM2 antibody	Rb pAb	Hu	WB, ICC/IF, IHC-P, IP, ChIP assay



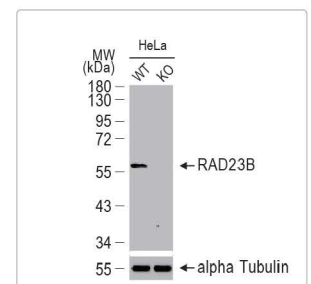
Ku70 antibody  
(GTX101820)



Ku80 antibody  
(GTX109935)



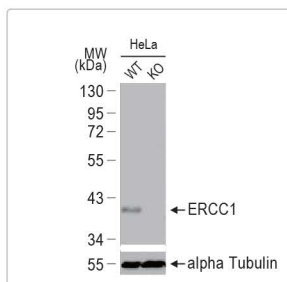
Mre11 antibody [12D7]  
(GTX70212)



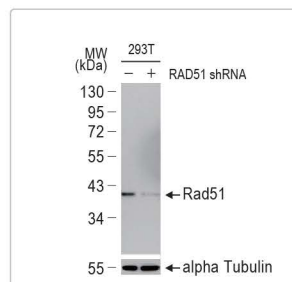
RAD23B antibody  
(GTX113820)

# DNA Damage and Repair

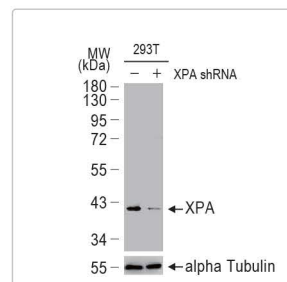
Cat. No.	Product Name	Clonality	Reactivity	Application
GTX133996	MDM2 (phospho Ser166) antibody	Rb pAb	Hu	WB
GTX636826	Mre11 antibody [HL1386]	Rec Rb mAb	Hu,Ms,Rat,Dog	WB, ICC/IF, IHC-P
GTX70212	Mre11 antibody [12D7]	Ms mAb	Hu,Rat	WB, ICC/IF, IHC-P, IP, ELISA, Functional Assay, PLA
GTX118741	Mre11 antibody	Rb pAb	Hu,Ms,Rat	WB, ICC/IF, IHC-P, IP
GTX110582	MSH2 antibody [C2C3], C-term	Rb pAb	Hu	WB
GTX111661	MSH6 antibody [C1C2], Internal	Rb pAb	Hu,Ms,Zfsh	WB, ICC/IF, IHC-P, IP, EMSA, IHC
GTX70224	NBS1 antibody [1D7]	Ms mAb	Hu,Ms,Rat	WB, ICC/IF, IP
GTX103229	NBS1 antibody	Rb pAb	Hu	WB, ICC/IF, IP
GTX133883	NBS1 (phospho Ser343) antibody	Rb pAb	Hu	WB
GTX129607	NEIL1 antibody	Rb pAb	Hu	WB
GTX629543	p21 Cip1 antibody [GT1032]	Ms mAb	Hu,Ms	WB, ICC/IF, IHC-P, FACS, IP
GTX112898	p21 Cip1 antibody	Rb pAb	Hu,Chk	WB, ICC/IF, IHC-P
GTX70214	p53 antibody [DO1]	Ms mAb	Hu,Ms	WB, ICC/IF, IHC-P, IHC-Fr, FACS, IP, ELISA
GTX102965	p53 antibody	Rb pAb	Hu,Ms,Zfsh	WB, ICC/IF, IHC-P, IP, ChIP assay
GTX133905	p53 (phospho Ser6) antibody	Rb pAb	Hu	WB
GTX132995	p53 (phospho Ser15) antibody	Rb pAb	Hu	WB, ICC/IF
GTX133902	p53 (phospho Ser33) antibody	Rb pAb	Hu	WB
GTX634168	p53 (phospho Ser46) antibody [GT1018]	Ms mAb	Hu	WB, ICC/IF, IHC-P
GTX133904	p53 (phospho ser392) antibody	Rb pAb	Hu	WB
GTX117515	p53 (mono-methyl Lys372) antibody	Rb pAb	Hu,Frg,Squirrel	WB, ICC/IF, IHC-P
GTX636804	PARP antibody [HL1364]	Rec Rb mAb	Hu,Ms	WB, ICC/IF, IHC-P
GTX628836	PARP antibody [GT6212]	Ms mAb	Hu,Ms,Rat	WB, IHC-P, IP
GTX100573	PARP antibody	Rb pAb	Hu,Ms,Rat	WB, ICC/IF, IHC-P, IP, ChIP assay
GTX132329	PARP (cleaved Asp214) antibody	Rb pAb	Hu	WB, ICC/IF
GTX111205	PRP19 antibody	Rb pAb	Hu,Ms	WB, ICC/IF, IHC-P
GTX638175	Rad21 antibody [HL2171]	Rec Rb mAb	Hu,Ms,Rat	WB, IHC-P
GTX106012	Rad21 antibody	Rb pAb	Hu,Ms,Rat	WB, ICC/IF, IHC-P, IP, ChIP assay
GTX113820	RAD23B antibody	Rb pAb	Hu	WB, ICC/IF, IHC-P
GTX70228	Rad50 antibody [13B3]	Ms mAb	Hu,Ms,Rat,Mk	WB, ICC/IF, IHC-P, IP, IHC, in vitro
GTX119732	Rad50 antibody [C1C2], Internal	Rb pAb	Hu,Ms,Rat	WB, IHC-P
GTX119731	Rad50 antibody [N1N2], N-term	Rb pAb	Hu,Ms,Rat	WB, IHC-P, IP
GTX124140	Rad50 antibody [N1N2], N-term	Rb pAb	Yeast	WB
GTX124141	Rad50 antibody [N3C2], Internal	Rb pAb	Yeast	WB
GTX70230	Rad51 antibody [14B4]	Ms mAb	Hu,Ms,Rat,Chk	WB, ICC/IF, IHC-P, IP, IHC, PLA
GTX100469	Rad51 antibody [N1C2]	Rb pAb	Hu,Ms,Rat,Zfsh	WB, ICC/IF, IHC-P, IP
GTX70258	RPA32 antibody	Rb pAb	Hu,Ms	WB, ICC/IF
GTX113004	RPA32 antibody	Rb pAb	Hu,Ms,Rat	WB, ICC/IF, IHC-P
GTX637377	WRN antibody [HL1729]	Rec Rb mAb	Hu	WB, IHC-P
GTX101081	WRN antibody	Rb pAb	Hu	WB, ICC/IF, IHC-P, IP
GTX103168	XPA antibody	Rb pAb	Hu	WB, ICC/IF, IHC-P, IP
GTX70294	XPC antibody [3.26]	Ms mAb	Hu,Ms	WB, ICC/IF, IHC-P
GTX102840	XPC antibody [C2C3], C-term	Rb pAb	Hu	WB, ICC/IF, IHC-P
GTX111712	XRCC1 antibody [N1N3]	Rb pAb	Hu,Rat	WB, ICC/IF, IHC-P
GTX100113	XRCC2 antibody [N1N3]	Rb pAb	Hu,Ms	WB
GTX100115	XRCC3 antibody [C1C3]	Rb pAb	Hu	WB, ICC/IF
GTX109632	XRCC4 antibody	Rb pAb	Hu,Ms	WB, ICC/IF, IHC-P
GTX129286	XPF antibody	Rb pAb	Hu,Ms	WB



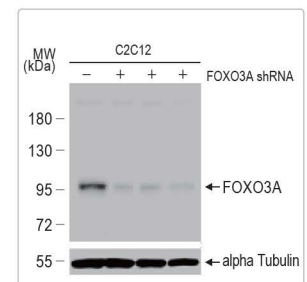
ERCC1 antibody  
(GTX129282)



Rad51 antibody [14B4]  
(GTX70230)



XPA antibody  
(GTX103168)



FOXO3A antibody  
(GTX100277)