

Epigenetics Histone Modification

- Your Expertise
- Our Antibodies
- Accelerated Discovery

www.genetex.com

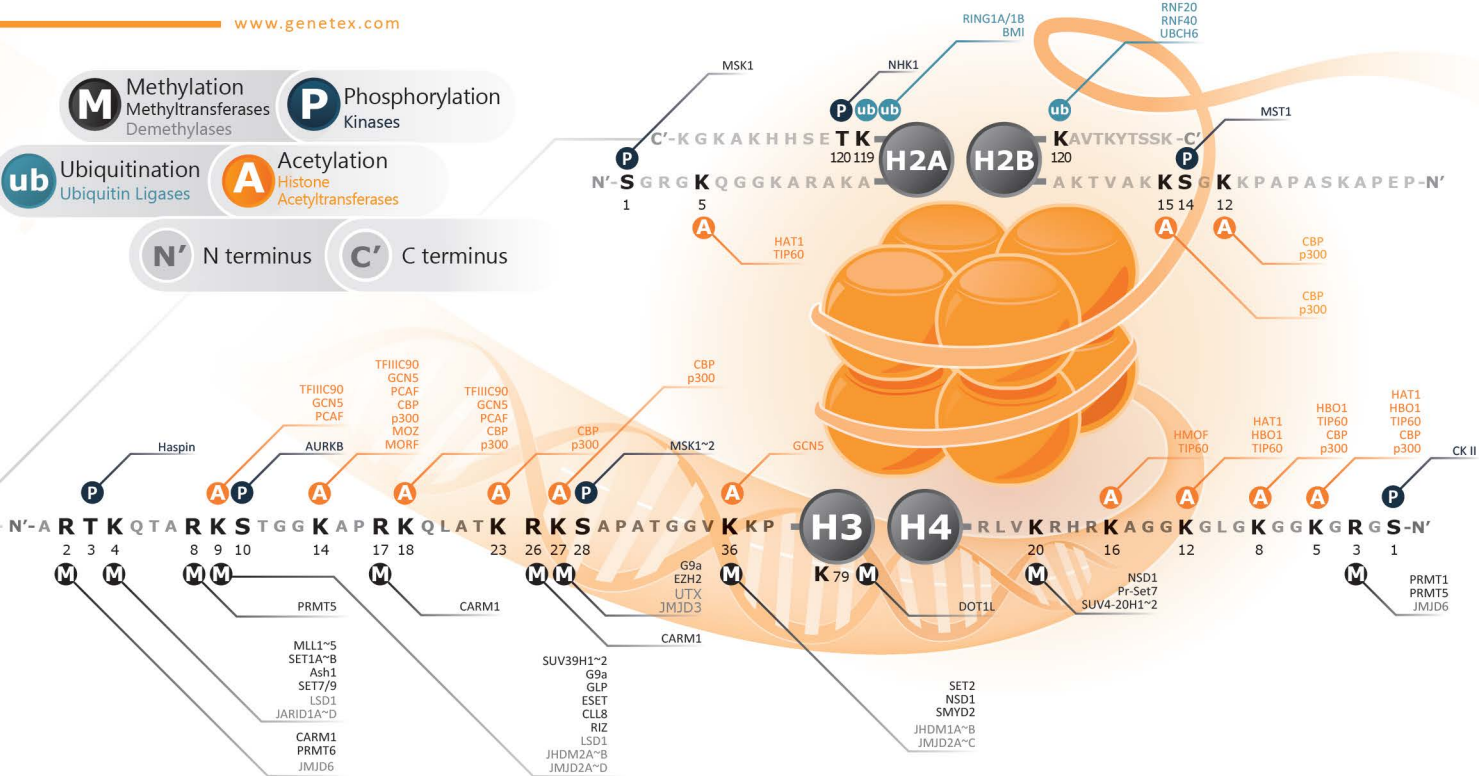
M Methylation
Methyltransferases
Demethylases

P Phosphorylation
Kinases

ub Ubiquitination
Ubiquitin Ligases

A Acetylation
Histone
Acetyltransferases

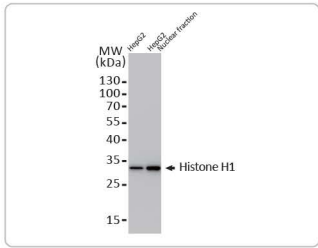
N' N terminus **C'** C terminus



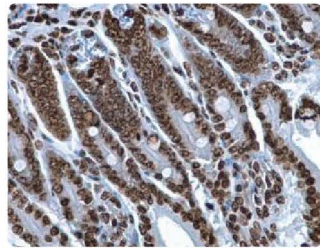
The nucleosome core particle is the fundamental structural unit of the eukaryotic genome. It consists of a histone octamer composed of two H2A-H2B dimers and a H3-H4 tetramer wrapped by ~146 base pairs of DNA. A linker histone (i.e., H1) associates with the nucleosomal dyad as well as with linker DNA on either side of the nucleosome, resulting in the formation of the chromatosome. All the core and linker histones are post-translationally decorated, with at least 160 total modifications such as acetylation, methylation, and phosphorylation. These modifications are thought to impact chromatin functions by either altering chromatin packaging or through the recruitment/inhibition of specific chromatin binding factors.

Histone Antibodies

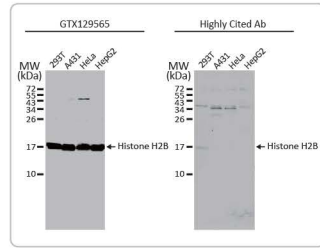
Recombinant Citation Support Comparable Abs Orthogonal Validation



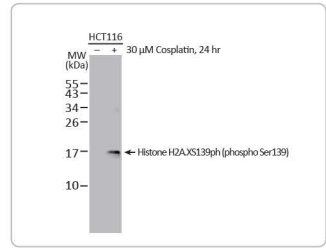
Histone H1.0 antibody (GTX114462)



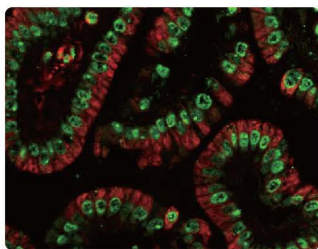
Histone H2A antibody (GTX129418)



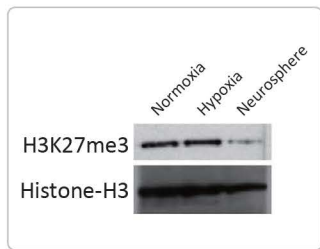
Histone H2B antibody (GTX129565)



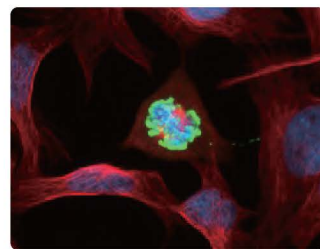
Histone H2A.XS139ph (phospho Ser139) antibody [HL1299] (GTX636713)



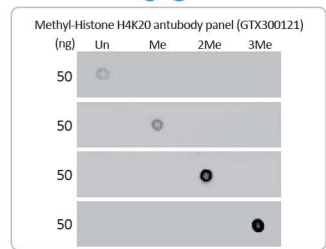
Histone H3 antibody (GTX122148)



Histone H3K27me3 (Tri-methyl Lys27) antibody (GTX121184)












Histone H3S10ph (phospho Ser10) antibody [HL1752] (GTX637402)














Histone H4 antibody (GTX129560)











Histone H1 antibodies

	Cat. No.	Product	Clonality	Reactivity	Applications
Unmodified	 GTX114462	Histone H1.0 antibody	Rb pAb	Hu,Ms,Rat	WB, ICC/IF, IHC-P
	 GTX117055	Histone H1.1 antibody	Rb pAb	Hu	WB
	 GTX122561	Histone H1.2 antibody	Rb pAb	Hu	WB, ICC/IF, IHC-P
	 GTX104481	Histone H1.3 antibody	Rb pAb	Hu,Ms	ICC/IF, IHC-P
	 GTX121670	Histone H1.4 antibody [N1N2], N-term	Rb pAb	Hu	WB, IHC-P
	 GTX117438	Testis-specific H1 histone antibody	Rb pAb	Hu	WB
	 GTX87506	Histone H1 antibody	Rb pAb	Hu,Ms	WB, ICC/IF, IHC-P
Acetylation	 GTX88006	Histone H1K25ac (acetyl Lys25) antibody	Rb pAb	Hu, Mk	WB, IHC-P
Phosphorylation	 GTX121669	Histone H1S35ph (phospho Ser35) antibody	Rb pAb	Hu	WB, ICC/IF, IHC-P



























Histone H2A antibodies

	Cat. No.	Product	Clonality	Reactivity	Applications
Unmodified	 GTX129418	Histone H2A antibody	Rb pAb	Hu,Ms,Rat	WB, ICC/IF, IHC-P
	 GTX129564	Histone H2A.2 antibody	Rb pAb	Hu	WB
	 GTX108272	Histone H2A.X antibody	Rb pAb	Hu,Ms,Rat	WB, ICC/IF, IHC-P, IP
	 GTX127343	Histone H2A.X antibody	Rb pAb	Zfsh, Nothobranchius furzeri	WB, IHC-Wm
	 GTX108273	Histone H2A.Z antibody	Rb pAb	Hu,Ms,Zfsh,Cat,Dog	WB, ICC/IF, IHC-P, IHC-Wm, IP, ChIP assay
Acetylation	 GTX633388	Histone H2AK5ac (acetyl Lys5) antibody [GT1262]	Ms mAb	Hu,Ms,Rat	WB, ICC/IF, IHC-P
	 GTX128961	Histone H2AK5ac (acetyl Lys5) antibody	Rb pAb	Hu	WB, ICC/IF, IP, Dot
	 GTX60813	Histone H2A.Z (acetyl Lys4/Lys7/Lys11) antibody - ChIP grade	Rb pAb	Hu,Ms	WB, ICC/IF, Dot, ELISA, ChIP assay, ChIP-seq
Phosphorylation	 GTX636713	Histone H2A.XS139ph (phospho Ser139) antibody [HL1299]	Rec Rb mAb	Hu,Ms	WB, ICC/IF, IHC-P
	 GTX628789	Histone H2A.XS139ph (phospho Ser139) antibody [GT2311]	Ms mAb	Hu,Ms,Rat	WB, ICC/IF, IHC-P, IP
	 GTX127340	Histone H2A.XS139ph (phospho Ser139) antibody	Rb pAb	Hu,Ms,Rat,Zfsh	WB, ICC/IF, IHC-P, IHC-Fr, IHC-Wm

Histone H2B antibodies

	Cat. No.	Product	Clonality	Reactivity	Applications
Unmodified	 GTX633909	Histone H2B antibody [GT387]	Ms mAb	Hu	WB
	 GTX115955	Histone H2B antibody	Rb pAb	Hu,Ms,Zfsh	WB, ICC/IF, IHC-P
Acetylation	 GTX129565	Histone H2B antibody	Rb pAb	Hu,Ms	WB, IP
	 GTX128963	Histone H2BK5ac (acetyl Lys5) antibody	Rb pAb	Hu	WB, ICC/IF, Dot
	 GTX88011	Histone H2BK12ac (acetyl Lys12) antibody	Rb pAb	Hu, Mk	WB, ICC/IF, IHC-P
	 GTX88002	Histone H2BK15ac (acetyl Lys15) antibody	Rb pAb	Hu,Ms	WB, ICC/IF, IHC-P
	 GTX633409	Histone H2BK20ac (acetyl Lys20) antibody [GT578]	Ms mAb	Hu,Ms	WB, ICC/IF, IHC-P
	 GTX128962	Histone H2BK20ac (acetyl Lys20) antibody	Rb pAb	Hu	WB, ICC/IF, IP, Dot
Phosphorylation	 GTX33598	Histone H2B (phospho Ser14) antibody [RM238]	Rb pAb	Hu	WB, ICC/IF, ELISA
Ubiquitination	 GTX54654	Histone H2B (ubiquitinated) antibody [NRO3]	Ms mAb	Hu,Ms,Dm,At	WB, ChIP assay

Histone H3 antibodies

	Cat. No.	Product	Clonality	Reactivity	Applications
Unmodified	 GTX129546	Histone H3 antibody	Rb pAb	Hu,Ms,Rat,Dm	WB, IHC-P
	 GTX122148	Histone H3 antibody	Rb pAb	Hu,Ms,Rat,Dm,Pig, Mk,Fungi,Golden Syrian Hamster,Rice	WB, ICC/IF, IHC-P, IP, ChIP assay, IHC
	 GTX122150	Histone H3 antibody	Rb pAb	Hu,Ms,Dm	WB, ICC/IF, IHC-P
	 GTX101754	Histone H3.3 antibody	Rb pAb	Hu,Rat	WB, ICC/IF
	 GTX115549	Histone H3.3B antibody	Rb pAb	Hu,Ms,Rat	WB, ICC/IF, IHC-P
Methylation	 GTX124114	Histone H3R2me2 (Asymmetric Di-methyl Arg2) antibody	Rb pAb	Hu	WB, Dot
	 GTX60818	Histone H3K4me1 (Mono-methyl Lys4) antibody - ChIP grade	Rb pAb	Hu,Ms	WB, ICC/IF, Dot, ELISA, ChIP assay, Protein Array
	 GTX121915	Histone H3K4me2 (Di-methyl Lys4) antibody	Rb pAb	Hu	WB, ICC/IF, IHC-P, IP, ChIP assay
	 GTX128954	Histone H3K4me3 (Tri-methyl Lys4) antibody	Rb pAb	Hu,Ms,Rat,Zfsh,Dm	WB, ICC/IF, IHC-P, IHC-Fr, IHC-Wm, Dot, ChIP assay, EM
	 GTX54101	Histone H3K9me1 (mono-methyl Lys9) antibody	Rb pAb	Hu,Ms,Rat	WB, ICC/IF, IHC-P, Dot, ChIP assay
	 GTX54102	Histone H3K9me2 (di-methyl Lys9) antibody	Rb pAb	Hu,Ms,Rat	WB, ICC/IF, IHC-P, Dot, ChIP assay
	 GTX121677	Histone H3K9me3 (Tri-methyl Lys9) antibody	Rb pAb	Hu,Ms,Rat,Dog	WB, ICC/IF, IHC-P, IP, ChIP assay, EM
	 GTX54131	Histone H3R17me1 (mono-methyl Arg17) antibody	Rb pAb	Hu,Ms,Rat	WB, ICC/IF, IHC-P, Dot
	 GTX124113	Histone H3R17me2 (Asymmetric Di-methyl Arg17) antibody	Rb pAb	Hu,Ms	WB, IHC-P, Dot
	 GTX33907	Histone H3R17me2 (Symmetric Di-methyl Arg17) antibody	Rb pAb	Hu	WB, ICC/IF, IHC-P, Dot
	 GTX54139	Histone H3R26me1 (mono-methyl Arg26) antibody	Ms mAb	Hu,Ms	WB, ICC/IF, IHC-P, Dot
	 GTX33908	Histone H3R26me2 (Symmetric Di-methyl Arg26) antibody	Rb pAb	Hu,Ms,Rat	WB, ICC/IF, Dot
	 GTX54104	Histone H3K27me1 (mono-methyl Lys27) antibody	Rb pAb	Hu,Ms,Rat	WB, ICC/IF, IHC-P, Dot, ChIP assay
	 GTX54105	Histone H3K27me2 (di-methyl Lys27) antibody	Rb pAb	Hu,Ms,Rat	WB, ICC/IF, IHC-P, Dot, ChIP assay
	 GTX121184	Histone H3K27me3 (Tri-methyl Lys27) antibody	Rb pAb	Hu,Ms,Rat,Zfsh	WB, ICC/IF, IHC-P, IHC-Fr, IHC-Wm, Dot, EM
	 GTX54107	Histone H3K36me1 (mono-methyl Lys36) antibody	Rb pAb	Hu,Ms,Rat	WB, ICC/IF, IHC-P, Dot, ChIP assay
	 GTX630555	Histone H3K36me2 (Di-methyl Lys36) antibody [GT1488]	Ms mAb	Hu,Dm	WB
	 GTX60817	Histone H3K36me3 (Tri-methyl Lys36) antibody - ChIP grade	Rb pAb	Hu,Ms,At,Rice	WB, ICC/IF, Dot, ELISA, ChIP assay, Protein Array
	 GTX55483	Histone H3K79me1 (mono-methyl Lys79) antibody	Rb pAb	Hu,Ms	WB, ICC/IF, Dot, ChIP assay
	 GTX129776	Histone H3K79me2 (Di-methyl Lys79) antibody	Rb pAb	Hu	WB
 GTX54111	Histone H3K79me3 (tri-methyl Lys79) antibody	Rb pAb	Hu,Ms,Rat	WB, ICC/IF, IHC-P, Dot, ChIP assay	

Histone H3 antibodies

	Cat. No.	Product	Clonality	Reactivity	Applications
Acetylation	GTX630554	Histone H3K9ac (Acetyl Lys9) antibody [GT464]	Ms mAb	Hu	WB, ICC/IF
	GTX122648	Histone H3K9K14ac (Acetyl Lys9/Lys14) antibody	Rb pAb	Hu,Ms	WB, ICC/IF, Dot
	GTX60874	Histone H3K14ac (Acetyl Lys14) antibody [RM130]	Rb pAb	Hu	WB, ICC/IF, ELISA, ChIP assay
	GTX636937	Histone H3K18ac (Acetyl Lys18) antibody [HL1463]	Rec Rb mAb	Hu,Ms,Rat	WB, ICC/IF, IHC-P, Dot
	GTX128943	Histone H3K18ac (Acetyl Lys18) antibody	Rb pAb	Hu,Ms,Rat	WB, ICC/IF, IHC-P, IP, Dot, ChIP assay
	GTX633652	Histone H3K27ac (Acetyl Lys27) antibody [GT261]	Ms mAb	Hu,Ms,Rat	WB, IHC-P
Phosphorylation	GTX128944	Histone H3K27ac (Acetyl Lys27) antibody	Rb pAb	Hu,Ms,Rat	WB, ICC/IF, IHC-P, IP, Dot, ChIP assay, EM
	GTX60902	Histone H3K56ac (Acetyl Lys56) antibody [RM179]	Rb pAb	Hu	WB, ICC/IF, ELISA, ChIP assay, IHC
	GTX130458	Histone H3T3ph (phospho Thr3) antibody	Rb pAb	Hu,Ms,Rat	WB
	GTX637402	Histone H3S10ph (phospho Ser10) antibody [HL1752]	Rec Rb mAb	Hu,Ms,Zfsh	WB, ICC/IF, IHC-P, IHC-Wm
	GTX128116	Histone H3S10ph (phospho Ser10) antibody	Rb pAb	Hu,Ms,Rat,Zfsh,Bov	WB, ICC/IF, IHC-P, IHC-Wm, IP, ChIP assay
Methylation Phosphorylation	GTX128953	Histone H3S28ph (phospho Ser28) antibody	Rb pAb	Hu	WB, ICC/IF, IHC-P, Dot
	GTX60327	Histone H3K9me3S10ph (Tri-methyl Lys9/phospho Ser10) antibody - ChIP grade	Rb pAb	Hu	WB, ICC/IF, Dot, ELISA, ChIP assay
Acetylation Phosphorylation	GTX60329	Histone H3K27me3S28ph (Tri-methyl Lys27/phospho Ser28) antibody - ChIP grade	Rb pAb	Hu	WB, ICC/IF, IP, Dot, ELISA, ChIP assay
	GTX12180	Histone H3K9acS10ph (Acetyl Lys9/phospho Ser10) antibody [APH3-64]	Ms mAb	Hu,Ms,Rat,Dm,Bov,Chk,C. elegans,Frg	WB, IP, ELISA
Methylation Acetylation	GTX12181	Histone H3K9acS10ph (Acetyl Lys9/phospho Ser10) antibody	Rb pAb	Hu,Ms,Rat,Dm,Bov,Chk,C. elegans,Frg	WB, ICC/IF, IHC-P
	GTX60825	Histone H3R17me2K18ac (Asymmetric Di-methyl Arg17/Acetyl Lys18) antibody - ChIP grade	Rb pAb	Hu,Ms	WB, ICC/IF, Dot, ELISA, ChIP assay

Histone H4 antibodies

	Cat. No.	Product	Clonality	Reactivity	Applications
Unmodified	GTX637870	Histone H4 antibody [HL1977]	Rec Rb mAb	Hu,Ms,Rat	WB, ICC/IF, IHC-P
	GTX129560	Histone H4 antibody	Rb pAb	Hu,Ms,Rat,Zfsh	WB, ICC/IF, IHC-P
Methylation	GTX60904	Histone H4R3me1 (Monomethyl Arg3) antibody [RM195]	Rb pAb	Hu	WB, ICC/IF, ELISA
	GTX33909	Histone H4R3me2 (Symmetric dimethyl Arg3) antibody	Rb pAb	Hu,Ms,Rat	WB, ICC/IF, IHC-P, Dot
	GTX128959	Histone H4K20me1 (monomethyl Lys20) antibody	Rb pAb	Hu,Ms	WB, ICC/IF, Dot
	GTX630545	Histone H4K20me2 (dimethyl Lys20) antibody [GT1851]	Ms mAb	Hu,Ms	WB, ICC/IF, IP, Dot, ChIP assay
	GTX128960	Histone H4K20me3 (trimethyl Lys20) antibody	Rb pAb	Hu,Ms,Rat	WB, ICC/IF, IHC-P, Dot
Acetylation	GTX00775	Histone H4K5ac (acetyl Lys5) antibody [GT1138]	Rec Rb mAb	Hu,Ms,Rat	WB, ICC/IF, IHC-P
	GTX60337	Histone H4K5K8K12ac (acetyl Lys5/Lys8/Lys12) antibody - ChIP grade	Rb pAb	Hu,Ms	WB, ICC/IF, Dot, ELISA, ChIP assay
	GTX122653	Histone H4K5K8K12K16ac (acetyl Lys5/Lys8/Lys12/Lys16) antibody	Rb pAb	Hu,Ms,Rat	WB, ICC/IF, IHC-P, Dot
	GTX128957	Histone H4K8ac (acetyl Lys8) antibody	Rb pAb	Hu,Ms,Rat	WB, ICC/IF, IHC-P, IP, Dot, ChIP assay, IHC (Free Floating)
	GTX60912	Histone H4K12ac (Acetyl Lys12) antibody [RM202]	Rb pAb	Hu	WB, ICC/IF, ELISA
	GTX632067	Histone H4K16ac (Acetyl Lys16) antibody [GT1271]	Ms mAb	Hu,Ms,Rat	WB, ICC/IF, IHC-P
	GTX60908	Histone H4K20ac (Acetyl Lys20) antibody [RM205]	Rb pAb	Hu	WB, ICC/IF, ELISA
Phosphorylation	GTX60903	Histone H4S1ph (phospho Ser1) antibody [RM194]	Rb pAb	Hu	WB, ICC/IF, ELISA

Histone Modifying Enzymes

Cat. No.	Product	Clonality	Reactivity	Applications
GTX108013	EZH1 antibody [N1], N-term	Rb pAb	Hu	WB, ICC/IF, IHC-P
GTX110384	EZH2 antibody	Rb pAb	Hu,Rat	WB, ICC/IF, ChIP assay
GTX82503	EZH2 antibody	Rb pAb	Hu,Ms	WB, ICC/IF, IHC-P, FACS
GTX128164	G9a antibody	Rb pAb	Hu	WB, ICC/IF, IHC-P, IP
GTX129153	G9a antibody	Rb pAb	Hu,Ms,Rat	WB, ICC/IF, IHC-P, IP, ChIP assay
GTX110643	HAT1 antibody	Rb pAb	Hu	WB, ICC/IF, IHC-P, IP, ChIP assay
GTX637290	HDAC1 antibody [HL1691]	Rec Rb mAb	Hu	WB, ICC/IF
GTX100513	HDAC1 antibody	Rb pAb	Hu,Ms,Rat,Zfsh	WB, ICC/IF, IHC-P, IHC-Fr, IHC-Wm, IP, ChIP assay
GTX637020	HDAC2 antibody [HL1545]	Rec Rb mAb	Hu,Ms,Rat	WB, ICC/IF, IHC-P
GTX109642	HDAC2 antibody	Rb pAb	Hu,Ms,Rat	WB, ICC/IF, IHC-P, IP, ChIP assay
GTX637399	HDAC3 antibody [HL1749]	Rec Rb mAb	Hu,Ms,Rat	WB, IHC-P
GTX113303	HDAC3 antibody	Rb pAb	Hu,Ms,Rat,Zfsh	WB, ICC/IF, IHC-P, IHC-Wm, IP, ChIP assay
GTX110231	HDAC4 antibody [N3C1], Internal	Rb pAb	Hu,Ms,Rat	WB, ICC/IF, IHC-P, IHC-Fr, IP
GTX50861	HDAC4/HDAC5/HDAC9 antibody	Rb pAb	Hu	WB, ICC/IF, IHC-P
GTX50485	HDAC5 antibody	Rb pAb	Hu	WB, IHC-P
GTX100722	HDAC6 antibody [N1], N-term	Rb pAb	Hu,Ms,Rat	WB, ICC/IF, IHC-P, FACS
GTX114179	HDAC7 antibody [C2C3], C-term	Rb pAb	Hu	WB, ICC/IF, IHC-P, IP
GTX105074	HDAC8 antibody [N1C2]	Rb pAb	Hu	WB
GTX132949	HDAC9 antibody	Rb pAb	Hu,Ms	WB, IHC-P
GTX84387	HDAC10 antibody [2H6]	Ms mAb	Hu	WB, ICC/IF, FACS
GTX116403	HDAC11 antibody	Rb pAb	Hu,Ms	WB
GTX110045	JARID1C antibody [N1N2-2], N-term	Rb pAb	Hu	WB
GTX32688	JHDM1D antibody	Rb pAb	Hu,Ms,Rat	WB
GTX124222	JMJD3 antibody [C2], C-term	Rb pAb	Hu,Ms,Rat	WB, IHC-P
GTX85252	JMJD4 antibody	Rb pAb	Hu,Rat	WB, IHC-P, ELISA
GTX85251	JMJD5 antibody	Rb pAb	Hu,Ms,Rat	WB, IHC-P, ELISA

Histone Modifying Enzymes

Cat. No.	Product	Clonality	Reactivity	Applications
GTX129046	KDM3A antibody	Rb pAb	Hu	WB, IP
GTX116198	 KDM3B antibody [C2C3], C-term	Rb pAb	Hu	WB, IP
GTX128497	 KDM4A antibody	Rb pAb	Hu,Rat	WB
GTX53804	 KDM4B antibody	Rb pAb	Hu	WB, IHC-P, FACS
GTX84280	 KDM4C antibody [5B9]	Ms mAb	Hu	WB, ICC/IF, IHC-P
GTX120872	KDM4D antibody	Rb pAb	Hu	WB
GTX130278	 KDM5A / Jarid1A / RBBP2 antibody	Rb pAb	Hu	WB
GTX129872	KDM5B antibody	Rb pAb	Hu	WB
GTX129826	 KDM5D antibody	Rb pAb	Hu	WB
GTX637379	  KDM6A antibody [HL1731]	Rec Rb mAb	Hu,Cat,Dog	WB, ICC/IF, IHC-P
GTX630412	KDM6A antibody [GT1612]	Ms mAb	Hu	WB
GTX121246	  KDM6A antibody [N2C1], Internal	Rb pAb	Hu,Ms	WB, ICC/IF, IHC-P, IP, ChIP assay
GTX115660	LSD1 antibody	Rb pAb	Hu,Rat	WB
GTX54328	 LSD1 antibody	Rb pAb	Hu	WB, ICC/IF, IP
GTX129380	 MYST1 antibody	Ms mAb	Hu	WB
GTX102041	 MYST2 antibody [N2C1], Internal	Rb pAb	Hu,Ms	WB, IHC-P
GTX112307	NCOA2 antibody [C2C3], C-term	Rb pAb	Hu	WB, ICC/IF
GTX109666	 PCAF antibody [C3], C-term	Rb pAb	Hu,Ms	WB
GTX630186	PRMT1 antibody [GT779]	Ms mAb	Hu,Ms,Rat	WB, ICC/IF, IHC-P
GTX128211	PRMT1 antibody	Rb pAb	Hu,Zfsh	WB, ICC/IF
GTX103749	PRMT2 antibody [N1C2]	Rb pAb	Hu	WB, ICC/IF, IHC-P
GTX116478	 PRMT3 antibody	Rb pAb	Hu,Ms	WB, IP
GTX80395	CARM1 antibody [3H2]	Ms mAb	Hu,Ms,Rat,Mk	WB, ICC/IF, IHC-P, FACS, ELISA
GTX129040	CARM1 antibody	Rb pAb	Hu	WB, IHC-P
GTX628488	 PRMT5 antibody [GT3610]	Ms mAb	Hu,Rat	WB, IP
GTX116004	 PRMT5 antibody [N1C1]	Rb pAb	Hu,Ms	WB, IHC-P, IP, ChIP assay
GTX49197	PRMT6 antibody [2C3-F1-G1]	Ms mAb	Hu	WB, ICC/IF, IHC-P
GTX116570	 PRMT7 antibody	Rb pAb	Hu,Ms,Rat	ICC/IF, IHC-P, IP, ChIP assay
GTX47431	PRMT8 antibody, C-term	Rb pAb	Hu	WB
GTX119484	SMYD1 antibody	Rb pAb	Hu,Ms,Rat	WB, ICC/IF, IHC-P
GTX116510	 SMYD2 antibody	Rb pAb	Hu,Ms	WB, ICC/IF, IHC-P, IP
GTX121945	  SMYD3 antibody	Rb pAb	Hu,Ms	WB, ICC/IF, IP, ChIP assay
GTX32886	SMYD4 antibody	Rb pAb	Hu,Ms,Rat	WB, ICC/IF, IHC-P
GTX110518	SMYD5 antibody [C2C3], C-term	Rb pAb	Hu,Ms	WB, IHC-P
GTX70250	 SRC1 antibody [1135]	Ms mAb	Hu,Ms,Rat,Mk	WB, IP, ChIP assay
GTX112567	SRC1 antibody	Rb pAb	Hu	WB
GTX113869	 SRC3 antibody [N1N2], N-term	Rb pAb	Hu	WB, ICC/IF, IHC-P
GTX112197	  TIP60 antibody	Rb pAb	Hu,Ms	WB
GTX112198	 TIP60 antibody	Rb pAb	Hu,Ms,Rat	WB, IHC-P
GTX55370	 TIP60 (phospho Ser90) antibody	Rb pAb	Hu	WB, IHC-P